

Compact  
Size



High  
Performance



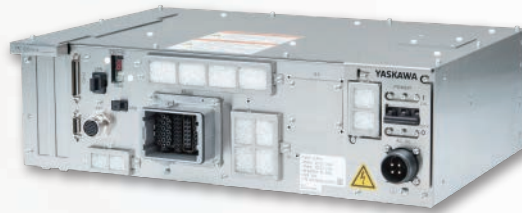
Safety  
Function

## Controller for small robots YRC1000micro

25L smaller than  
the former model(40L)

15 L

Height: **125** mm



Depth: **280** mm

Width: **425** mm

Introducing YASKAWA's new compact size controller with functions & performance optimized for transfer and assembly applications. Its compact size enables installation into a 19-inch rack, and its models\*1 are compatible with single-phase power supply.

This controller helps to minimize installation space, optimize performance, and improve our customers' productivity.

\*1: Please check the product specification sheet for compatible models.

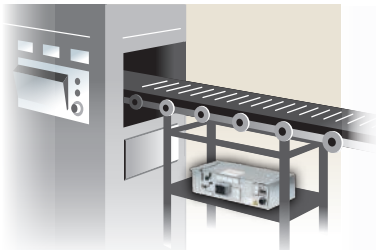
1

### Compact and Lightweight Controller

- Compact size of 15 L
- Weighs only 10.5 kg (9.5 kg less than the former model)\*2



Can be installed inside a 19-inch rack, inside equipment or conveyors.



\*2: For Japan, Asia, and North America model specifications

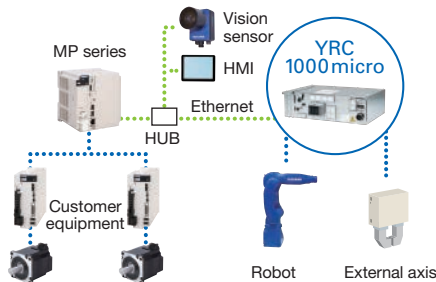
2

### Easy Connections to Peripheral Devices

- Can be easily connected with Yaskawa's external devices, such as machine controllers (MP series), PLCs, sensors, and HMI.



Facilitates the construction of flexible systems



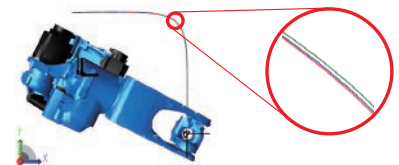
3

### New Motion Control (High Precision and High Speed)

- Cycle time improved by max. 10% (compared with the former model) due to optimized acceleration/deceleration control (depends on conditions).
- Significantly reduces error in path accuracy caused by differences in motion speed (improved by 80% compared with the former model).



Improves customer productivity



- Red: Playback track
- Green: Speed override track (50%)
- Blue: Test operation track

4

### Enhanced Safety Function

- Compatible with Functional Safety which monitors motion range and speed limitations.



Helps to minimize installation space required for equipment/facilities and reduces costs.

5

### Selection of programming pendant or software pendant (both are optional)

- Lighter programming pendant with better operability
  - Weighs only 730 g, the lightest programming pendant in its class, with improved cable installation.
  - Can confirm robot positions and postures on the 3D robot model display.
  - Touch screen allows intuitive operation to easily move the cursor and scroll.



- Can replace programming pendant with PC tool
  - PC software enables to monitor state or control axes via PC
  - Same usability as a programming pendant
  - Can switch between multiple controllers

# YRC1000micro

## ■ Specifications\*1

Item	Japan, Asia, and North America Model Specifications	Europe Model Specifications
Configuration	Open structure IP20*2	
Dimensions	425 (W)×280 (D)×125 (H) mm, 15 L	425 (W)×280 (D)×180 (H) mm, 22 L
Approx. Mass	10.5 kg (External axis amplifiers for up to two axes can be built in.)	16.0 kg (External axis amplifiers for up to two axes can be built in.)
Cooling System	Direct cooling	
Ambient Temperature	During operation: 0°C to +40°C During storage: -10°C to +60°C	
Relative Humidity	90% max. (non-condensing)	
Altitude	2000 m (with temperature derating) Derating condition of over 1000 m: max. ambient temperature decreases 1% per 100 m.	
Power Supply	Single-phase 200/230 VAC (+10% to -15%), 50/60 Hz (±2%)*3 Three-phase 200/220 VAC (+10% to -15%), 50/60 Hz (±2%)	
Grounding	Grounding resistance: 100 Ω or less	
Digital I/Os	Specialized signals: 7 inputs and 1 output General signals: 8 inputs and 8 outputs (8 transistor outputs)	
Positioning System	Serial communications (absolute encoder)	
Programming Capacity	JOB: 200,000 steps, 10,000 instructions CIO ladder: 1,500 steps max.	
Expansion Slots	PCI express: 2 slots	

\*1: The specifications are for a standard model. Refer to individual catalogs for detailed specifications of each model.

\*2: The YRC1000micro has an open structure (IP20) and must be used in a clean environment (free from electrically-conductive dirt and dust) that meets the standard of pollution degree 2 specified in IEC 60664-1.

\*3: Please check the product specification sheet for compatible models of the single-phase power supply.

Item	
LAN (Connection to Host)	1 (10BASE-T/100BASE-TX)
Interface	Not possible
Drive Units	SERVOPACK for AC servomotors

Programming Pendant (optional)*4	
Dimensions	152 (W) × 49.5 (D) × 300 (H) mm
Approx. Mass	0.730 kg
Material	Reinforced plastics
Operation Device	Select keys, axis keys, numerical/application keys, mode selector switch with keys (mode: teach, play, and remote), emergency stop button, enable switch, compact flash card interface device (compact flash is optional.), USB port (USB2.0, 1 port)
Display	5.7-inch TFT color LCD, touch panel VGA 640 × 480 pixels (alphanumeric characters, Chinese characters, Japanese letters, and others)
IEC Protection Class	IP54
Cable Length	Standard: 8 m Max.: 20 m (with optional extension cable)

\*4: A programming pendant or a dummy connector is required with this controller. (Sold separately.)

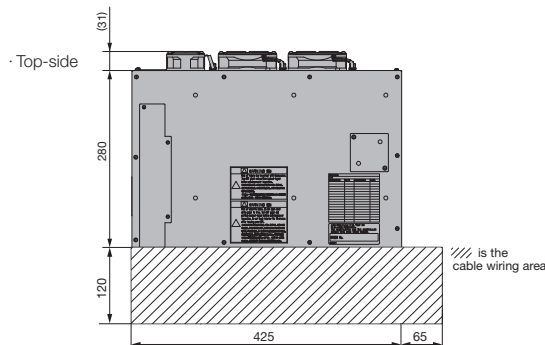
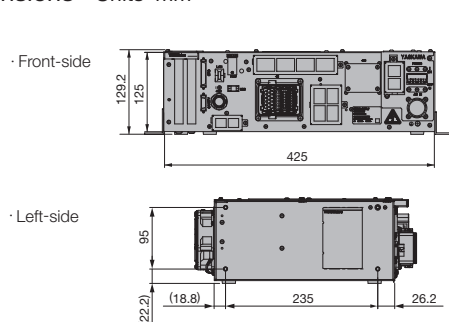
### • Programming pendant

The programming pendant for this controller is required. Different types of programming pendants cannot be connected to this controller because of differences in their specifications.

### • Dummy connector

The dummy connector must be inserted when the programming pendant is not connected or when a software pendant is used.

## ■ Dimensions Units: mm



### YASKAWA ELECTRIC CORPORATION

2-1 Kurosakishiroishi, Yahatanishi-ku, Kitakyushu, 806-0004, Japan  
Phone: +81-93-645-7703 Fax: +81-93-645-7802

### YASKAWA AMERICA, INC. (MOTOMAN ROBOTICS DIVISION)

100 Automation Way, Miamisburg, OH 45342, U.S.A.  
Phone: +1-937-847-6200 Fax: +1-937-847-6277

### YASKAWA EUROPE GmbH (ROBOTICS DIVISION)

Yaskawastrasse 1, 85391, Allershausen, Germany  
Phone: +49-8166-90-0 Fax: +49-8166-90-103

### YASKAWA NORDIC AB

Verkstadsgratan 2, Box 504, SE-385 25 Torsås, Sweden  
Phone: +46-480-417-800 Fax: +46-486-414-10

### YASKAWA ELECTRIC (CHINA) CO., LTD.

22F, One Corporate Avenue, No.222 Hubin Road, Huangpu District, Shanghai 200021, China  
Phone: +86-21-5385-2200 Fax: +86-21-5385-3299

### YASKAWA SHOUGANG ROBOT CO., LTD.

No.2 Building, No.6 Rongchang East Street, Beijing E&T Development Area, Beijing 100176, China  
Phone: +86-10-6788-2858 Fax: +86-10-6788-2878

### YASKAWA ELECTRIC KOREA CORPORATION

18F, KTB Bldg, 66 Yeoui-daero, Yeongdeungpo-gu, Seoul, 07325, Republic of Korea  
Phone: +82-2-784-7844 Fax: +82-2-784-8495

### YASKAWA ELECTRIC TAIWAN CORPORATION

12F, No.207, Sec. 3, Beishin Rd., Shindian District, New Taipei City 23143, Taiwan  
Phone: +886-2-8913-1333 Fax: +886-2-8913-1513

### YASKAWA ASIA PACIFIC PTE. LTD.

30A Kallang Place, #06-01, 339213, Singapore  
Phone: +65-6282-3003 Fax: +65-6289-3003

### YASKAWA ELECTRIC (THAILAND) CO., LTD.

59, 1st-5th Floor, Flourish Building, Soi Ratchadapisek 18, Ratchadapisek Road, Huaykwang, Bangkok 10310, Thailand  
Phone: +66-2-017-0099 Fax: +66-2-017-0199

### PT. YASKAWA ELECTRIC INDONESIA

Secure Building-Gedung B Lantai Dasar & Lantai 1 Jl. Raya Protokol Halim Perdanakusuma, Jakarta 13610, Indonesia  
Phone: +62-21-2982-6470 Fax: +62-21-2982-6471

### YASKAWA INDIA PRIVATE LIMITED (ROBOTICS DIVISION)

No.136, Sector-8, Industrial Estate, IMT Manesar, Gurugram, Haryana 122050, India  
Phone: +91-124-475-8500

# YASKAWA

YASKAWA ELECTRIC CORPORATION

In the event that the end user of this product is to be the military and said product is to be employed in any weapons systems or the manufacture thereof, the export will fall under the relevant regulations as stipulated in the Foreign Exchange and Foreign Trade Regulations. Therefore, be sure to follow all procedures and submit all relevant documentation according to any and all rules, regulations and laws that may apply. Specifications are subject to change without notice for ongoing product modifications and improvements.

© 2017 YASKAWA ELECTRIC CORPORATION

LITERATURE NO. CHEP C941115 00D <5>-0

Published in Japan November 2022  
22-10-49